



Shoreline School Board

## **AGENDA**

**August 30, 2021**

**7:00 p.m.**

**Shoreline Center - Shoreline Room  
and via Zoom**

### **Link to Meeting:**

<https://us02web.zoom.us/j/83835189596?pwd=UXZjN1lnL1BMazFVWTc4WGJkMHNsQT09>

Passcode: 100598

Webinar ID: 838 3518 9596

Dial-In Phone Numbers: 1-253-215-8782 or 1-669-900-6833

## **Special Board Meeting**

### **1. Presentation of Puget Sound Educational Service District's (PSESD) Online Learning Cooperative and Review of District Survey Results**

**Presenter:** Dr. Susana Reyes, Superintendent

Families have until Monday to submit survey input; survey results will be shared Monday both online and at this special board meeting. Revised PowerPoint has been uploaded as of Monday, August 30 @ 1:10 p.m.

[PSESD Cooperative final.pdf \(p. 2\)](#)

[8.30.21 Remote Learning Cooperative Special Board Meeting \(No Graphs\).pdf \(p. 14\)](#)

### **2. Action Item: Authority to Enter Into Agreement with PSESD for Online Learning Cooperative Services (Edgenuity)**

[PSOLC\\_Agreement Shoreline.pdf \(p. 18\)](#)

**3. Adjournment: \_\_\_\_\_ p.m.**



**Engaging Minds. Inspiring Dreams. Empowering Lives.**

## Mission

Provide a collaborative learning community which engages all students in learning the academic and work-life skills needed to achieve their individual potential and become responsible citizens.

**Special Meeting of the School Board of Directors  
August 30, 2021  
7:00PM**

# Purpose

- Provide information about a potential K-5 online learning option through a cooperative with the Puget Sound Educational Service District (PSESD)
- Provide results from the survey administered to K-5 families to learn more about the level of interests in this possible option
- Invite the Board to discuss, ask additional questions, deliberate, and consider taking action on approving the District contracting with PSESD for this program

# Background

- **Current state requirement for K-12 education calls for full-time, in-person learning for all schools**
- **The COVID-19 pandemic continues to evolve**
- **There is increased interest in an online learning option by some families**
- **The District does not have the staffing or fiscal resources to offer a remote learning option like the one that was offered during the spring of 2021**
- **The Puget Sound Educational Service District has recently developed an online learning cooperative that districts may join**
- **The District administered a survey to families of students in grades K-5 to determine the level of interest in the program offered through a cooperative with the Puget Sound Educational Service District**

# Puget Sound Online Cooperative

K-12 program allows students to engage in academic learning through a platform called Edgenuity

- Students stay enrolled in the District
- K-5 learning option for 6 courses/per semester
- Edgenuity provides WA State certified teachers
- Implementation and technical support provided to districts
- Edgenuity teachers are available, but the learning program is primarily asynchronous
- Edgenuity teachers will have office hours
- Parents serve as *learning coaches* and facilitate and support the student in the course
- Some workbook materials are provided
- There is a 14-day grace period for withdrawals without penalty

# District Responsibility

- District assigns a liaison to be the point of contact with PSESD
- The program falls under Alternative Learning Experience
  - Responsible for ensuring compliance with ALE requirements to claim enrollment referenced in [Chapter 392-550 WAC](#)
  - Requires District to carry out specific reporting and monitoring processes
    - Track weekly contact, progress, and intervention
    - Provide monthly progress reviews with families
  - Washington State Learning Plan (WSLP) for each student
  - There are specific rules related to how the District reports enrollment for apportionment and is funded only up to 90% of a 1.0 FTE

# District Responsibility

- Apply to OSPI for authorization as a “single district” online program
  - Approval time is 1-2 weeks
- One-time district base fee - \$5,000
- \$2,013 per semester per student, for 6 courses, 5 core and 1 elective
  - Language Arts
  - Mathematics
  - Science
  - Social Studies
  - Health and P.E.
  - Art
  - Technology
  - Music

# District Responsibility

**Administer all educational support elements including:**

- **Access to school counselors, social workers, nurses**
- **Tiered systems of supports**
- **Nutrition services**
- **Transitional Bilingual Education Program (TBIP)**
- **Highly Capable**
- **Truancy**
- **State assessments**
- **Ensuring accessibility to the program for students with disabilities**
- **Management of 504 plans**
- **Onsite provision of IEP services**
- **Other services as needed**

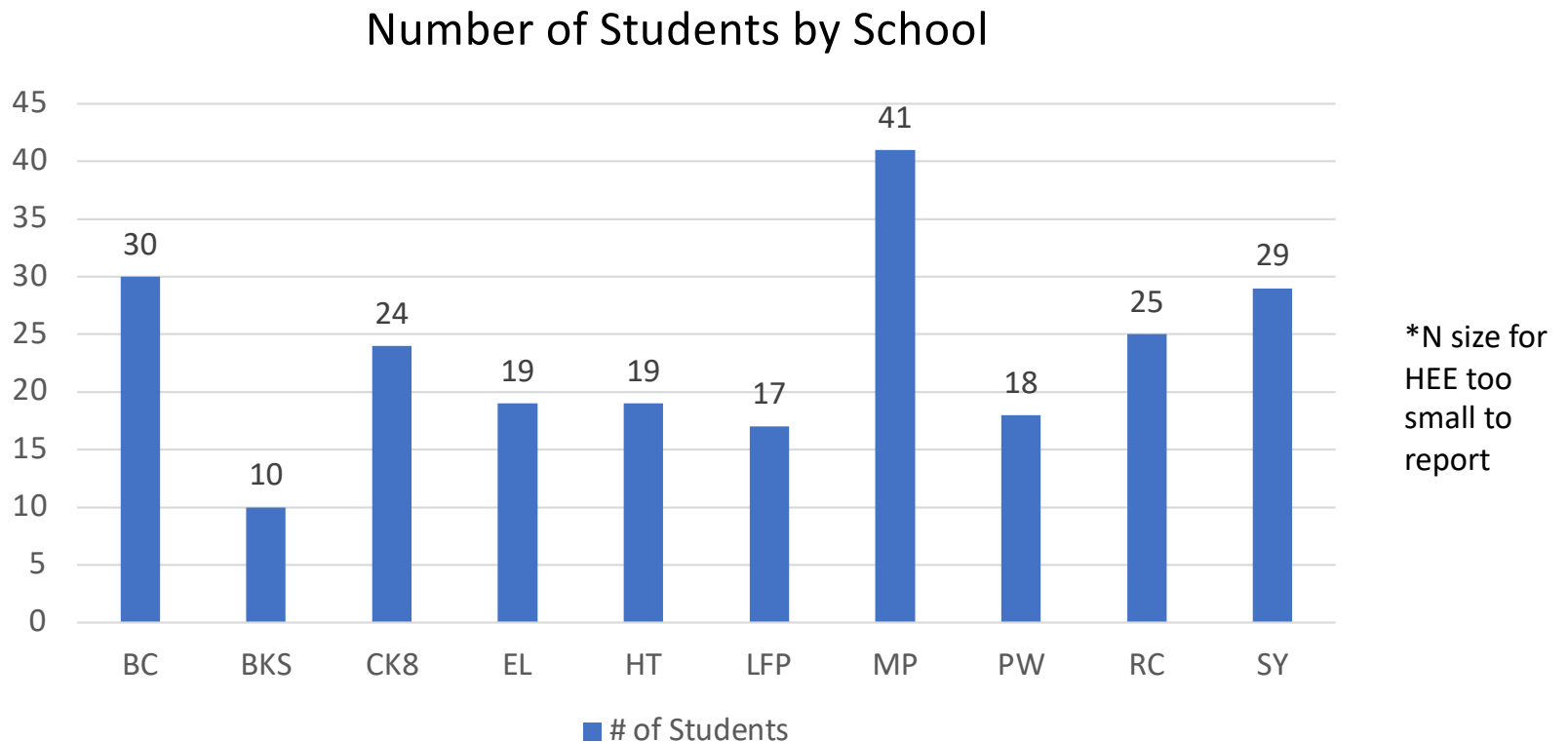


# Remote Learning Interest Survey Results

**961** Total Survey Submissions

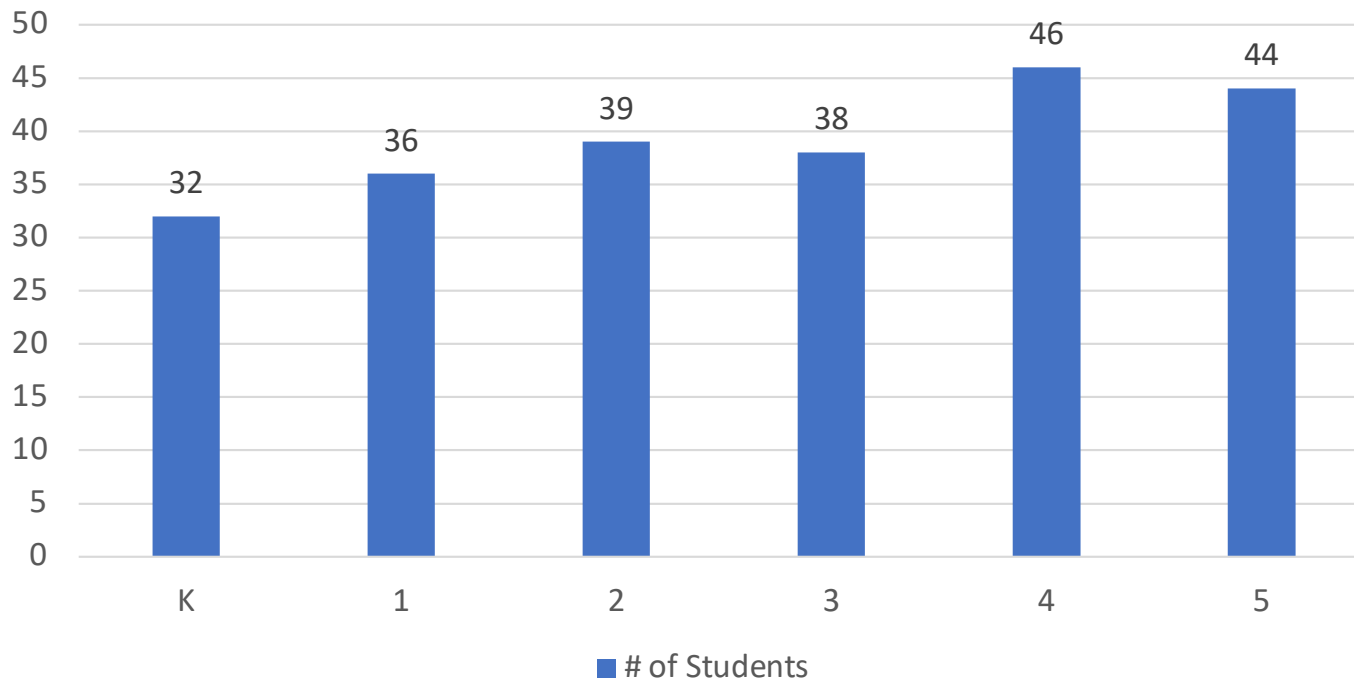
**190** families with **235** students preferred the PSESD Remote Program

## Survey data of those who preferred the PSESD Remote



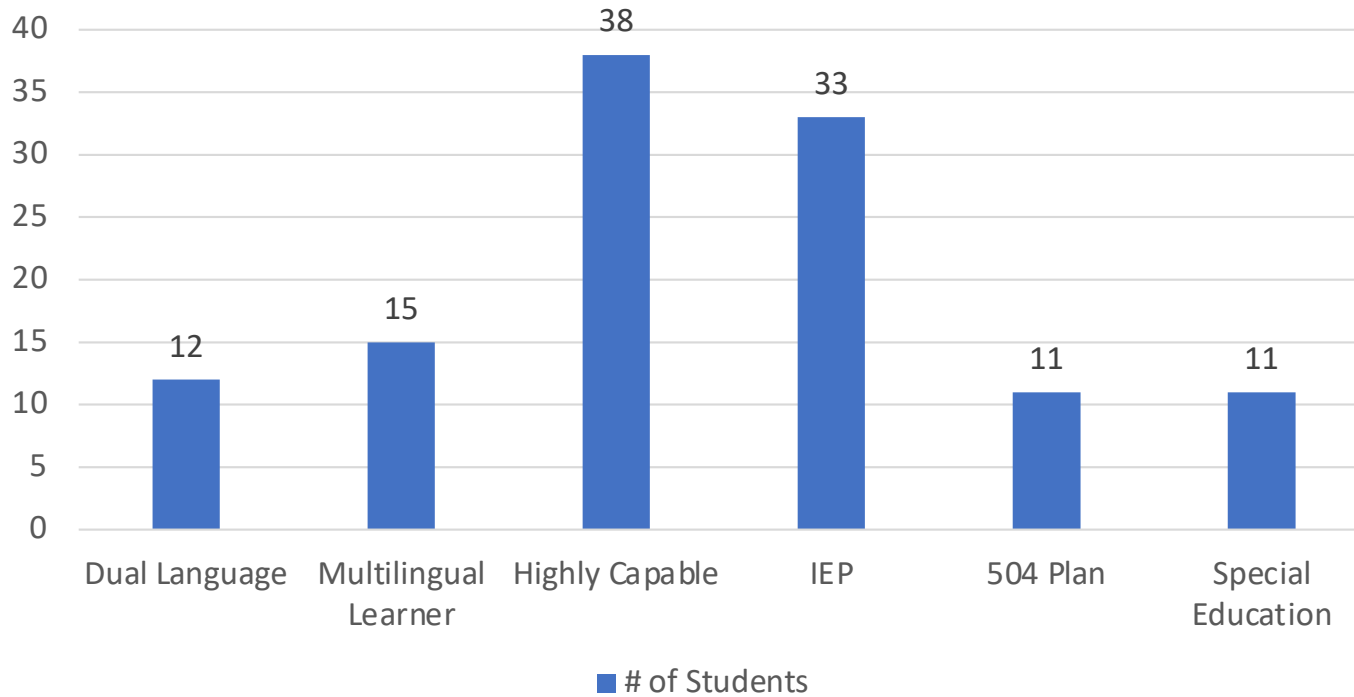
# Remote Learning Interest Survey Results

Number of Students by Grade Level



# Remote Learning Interest Survey Results

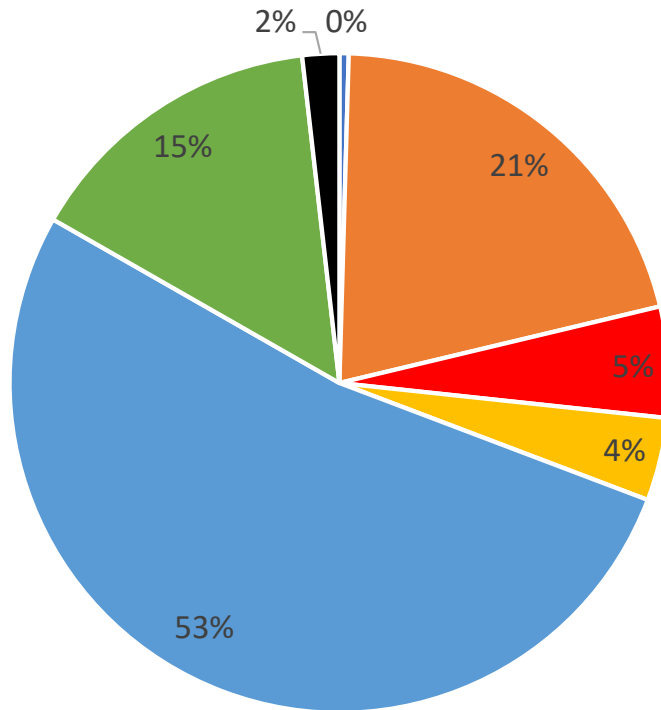
Number of Students by Special Program



\*N size for Learning Assistance/Title I too small to report

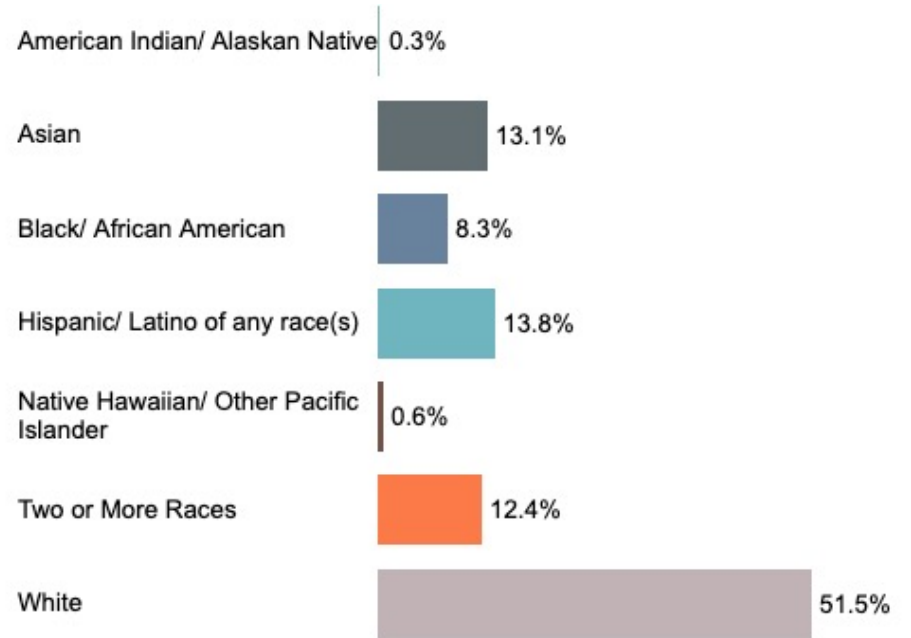
# Remote Learning Interest Survey Results

## Student Ethnicity



- American Indian/Alaska Native
- Asian
- Black/African American
- Hispanic/Latinx
- White
- Two or More
- Other

## Overall Student Population



Source: OSPI Report Card

# Next Steps

- Questions
- Board discussion
- Action by the Board
- If approved
  - District will meet with PSESD staff to determine final details of agreement
  - Determine final infrastructure needs and costs
  - Contact families to confirm their intent to enroll their child in the program
  - Establish registration process
  - Determine start date



## Estimated Financial and Staffing Impacts of Remote Cooperative Option

Additional slides for 8/30/21 Special Board Meeting  
Shoreline School District No. 412

# Financial Impacts

## Revenue estimates:

- \$ 9883 State funding per student/year
- Survey indicates 235 students
  - <\$2,322,561> if unenroll entirely
  - \$2,090,305 if enroll in cooperative (OSPI will fund at 90% of in person revenue)

## Expenditure estimates:

### Payments to Remote Learning Cooperative:

- \$5000 Base fee per district
- \$946,110 (for 235 K-5 students)

### Plus Direct supplemental services

- Special ed, 504, MLL, HiCap, Title, LAP instructional services
- Transportation for eligible students
- Nutrition services

Plus Indirect services: HR, Payroll, Business Office, Legal, Insurance, etc.

# Estimated Staffing Impacts

## Classroom Teachers

- 235 elementary students would normally be assigned to between 10.5 and 11 teachers (depends on grade level)
- Cannot reduce staff after May 15<sup>th</sup> (state law); may have vacancies due to leaves that would not need to be filled if classes were reconfigured
- \$1,615,792 UNFUNDED teacher contracts

## Specialists (SLP/OT/PT, Multi-Language Learners, HiCap, Title, LAP):

- Will need to schedule services for remote students
- If during same time would have been served, no impact
- If scheduled at different time, may need more staff
- Expect to need additional staff

## New position(s) may be needed:

- Remote Learning Coordinator
  - Assist families with registration/enrollment
  - Coordinate 235 individual student learning plans
  - Monitor progress for remote students and communicate with parents/guardians
  - Assist with accessing specialized services as required for each student
    - Special Ed/IEP services
    - 504 Plan accommodations
    - MLL/HiCap/Title/LAP instructional support
    - Meals
    - Transportation
- Estimated \$160,000 total cost per position (including extra days, payroll taxes and health insurance benefits)



## Logistics recommendation:

- Semester by semester decision
- Vacated classroom spots will be filled if possible
- If cooperative is an option, parent/guardian decision by September 7<sup>th</sup>

**PUGET SOUND EDUCATIONAL SERVICE DISTRICT  
REGIONAL ONLINE LEARNING COOPERATIVE  
Interlocal Agreement**

This Interlocal Agreement is made and entered into as of this 31st day of August 2021, by and between Puget Sound Educational Service District (“PSESD”), a political subdivision of Washington State and Shoreline School District, a Washington State school district (“District”).

**1. INTRODUCTION**

WHEREAS, PSESD and District are public agencies as defined by chapter 39.34 RCW and are authorized to enter into interlocal agreements to provide for joint or cooperative actions;

WHEREAS, Washington State law authorizes local school districts and educational service districts to join together to form cooperatives for the purpose of making joint purchases and operating joint programs (RCW 39.34 and 28A.320.080);

WHEREAS, Washington State law directs educational service districts (ESDs) to establish cooperative service programs for school districts within said educational service district boundaries (RCW 28A.310.180);

WHEREAS, Washington State law allows educational service districts (ESDs) to support regional online school programs (RCW 28A.250.010 states that a regional online school program is jointly developed and implemented by two or more school districts or an educational service district through an interdistrict cooperative program agreement that addresses, at minimum, how the districts share student full-time equivalency for state basic education funding purposes and how categorical education programs, including special education, are provided to eligible students.)

NOW THEREFORE, a Regional Online Learning Cooperative is hereby established according to the terms and conditions contained within this Agreement.

**2. NAME**

- A. This Cooperative shall be known as the Puget Sound Regional Online Learning Cooperative.

**3. PURPOSE OF AGREEMENT**

- A. PSESD and the District are entering into this Agreement for the purpose of the District’s participation in the Regional Online Learning Cooperative organized by PSESD. This K-12 program allows districts to provide students the opportunity to engage in anytime/anywhere academic learning through a platform called Edgenuity.
- B. The Regional Online Learning Cooperative is established as a resource for the mutual benefit of regional K-12 educational partners to access a variety of K-12 online learning options with students staying enrolled and connected to their home district.
- C. It is the intention of Regional Online Learning Cooperative to organize resources and strategies, facilitate regional professional development, peer networking, program implementation support, and technical assistance as needed
- D. The Regional Online Learning Cooperative is intended to be an advisory led, cost-effective model that facilitates the implementation of high-quality online learning services in partnership with Edgenuity.

PSESD Regional Online Learning Cooperative  
Interlocal Cooperative Agreement

**4. DURATION/TERMINATION**

A. The term of this Agreement shall be from the execution date to August 31, 2022.

**5. MEMBERSHIP**

A. Membership in the Regional Online Learning Cooperative is at the organizational level.

B. Membership entitles the Member Cooperative to services described in Attachment A.

C. Member District Responsibilities in Attachment B.

D. Members agree to program elements and assurances in Attachment C.

**6. DISTRICT MEMBERSHIP & COURSE FEES**

A. Cost for membership and course fees is assessed at: **\$TBD**

1. District Base Fee: \$5,000 per district/year
2. Per Course/Student Fees: **\$TBD**/semester

Costs are calculated based on the base fee and number of K-5 students.

K-5 with Edgenuity Teachers (WA Certified)

- **Minimum number TBD** K-5 Students @ \$2013 per semester/full-time student in 6 courses: **\$TBD**

B. Membership includes services and terms specified in Description of Services for 2021-2022 PSESD Regional Online Learning Cooperative marked as "Attachment A".

IN WITNESS WHEREOF, this parties have executed this Agreement.

**PUGET SOUND EDUCATIONAL  
SERVICE DISTRICT**

**MEMBER COOPERATIVE'S NAME:**

Shoreline School District

\_\_\_\_\_  
(Signature) (Date)

\_\_\_\_\_  
(Signature) (Date)

\_\_\_\_\_  
(Printed Name)

Dr. Susana Reyes, Superintendent  
(Printed Name)

\_\_\_\_\_  
(Address)

18560 1<sup>st</sup> Ave. NE; Shoreline, WA 98155  
(Address)

\_\_\_\_\_  
(Telephone Number)

206-393-4203  
(Telephone Number)

## Attachment A

### Description of Services PSESD Regional Online Learning Cooperative

- Variety of K-12 online learning options with or without district teachers
- Students stay enrolled and connected to home district
- Regional PD, access to shared resources and regular networking sessions
- Program Implementation Support
  - Leadership Coaching
  - TA support for special education and multilingual programs
  - Ed Tech transformation
- Centralized provider PD
- Courses taught by WA certified teachers
- Priority support from Edgenuity
- Data and reporting support
- Options to customize courses

## Attachment B

### Member District Responsibilities PSESD Regional Online Learning Cooperative

- Identify key point of contact
- Complete [OSPI Authorization](#) as a single district online program
- Adhere to state reporting requirements including enrollment reporting for state basic education funding and all reporting elements in CEDARS
- Ensure adequate internet access and recommended system requirements
  - [K-5 Network Requirements and White List](#)
- Administer all educational support elements: This may include
  - Access to school counselors, social workers, nurses
  - Transportation if/when needed
  - Tiered systems of supports
  - Nutrition services
  - Transitional Bilingual Education Program (TBIP)
  - Highly Capable
  - Truancy
  - High school & beyond planning
  - High school crediting and graduation pathways
  - State assessments
  - Others, as needed

## Program Elements and Assurances PSESD Regional Online Learning Cooperative

- **Program Design:** Edgenuity content, framing and program base with PSESD's lead management, coordination of regional professional development and customized technical support.
- **Program Management:** PSESD's Director of Ed Tech will manage and oversee the cooperative in partnership with District leads.
- **Staffing:** District can choose to use Edgenuity teachers for online courses (optional tutoring) and the partner district will be responsible for staffing for supports outside of enrolled courses. Districts can also choose to staff the online courses themselves.
- **Categorical program funding** should also include dropout prevention and CTE. Options will be offered to serve all elements of all programs. CTE Director will need to ensure CTE courses meet the standards that were approved in their CTE Framework.
- **Approved content:** Edgenuity is an approved provider by OSPI and will be the core content for the regional online school program. PSESD will ensure curriculum is aligned to WA state standards.
- **Marketing:** Various materials like brochures, sample WSLPs, etc., will be provided by PSESD and customizable for each District.
- **Compliance:** Reporting rules, ALE rules, online learning rules will be followed. Rules are well published and have been shared with participating Districts, each district would need to work with budget and enrollment for reporting guidelines/accuracy.
- **10% nonresident cap rule:** This will be in place for each single District program participant, and this will not be an issue for any District given the design of each district supporting their own students.
- **Reporting:** Each program is responsible for its own reporting; whoever claims a student in CEDARS must report data on that student. Partner districts would report and receive apportionment. Genius (Edgenuity SIS) has the capacity to generate a variety of reports to track each service and accompanying fees to reconcile expenses for number and type of course completion. PSESD lead will track services in partnership with Edgenuity lead in consultation with District.
- **Retention of enhanced funding:** Courses claimed for enrollment as ALE FTE are ineligible for enhanced CTE funding.
- **Enrollment tracking:** Time frame to reconcile initial head count and thereafter will be done monthly. Enrollment commitment would need to be quarterly at a minimum. Edgenuity has a 14-day grace period for withdrawals without penalty.
- **Communication:** Coherence between/among Districts, PSESD, & Edgenuity for enrolling & withdrawing students and hiring teachers/personnel will be critical. Each District will assign a liaison to be the point of contact with PSESD. This same liaison would be part of a larger team that could be dispatched to support specific elements.
- **3<sup>rd</sup> Party Vendor rules:** All parties agree to adhere to licensing contracts with 3<sup>rd</sup> party vendors.
- **Employees:** Employees are the responsibility of the District that hired them and evaluation of said employee.
- **Confidentiality, Harassment, Discrimination:** All parties agree to adhere to policies, practices and procedures on confidentiality, harassment, discrimination.
- **Student Privacy:** Districts review and adhere to district Student Information privacy policy especially with 3<sup>rd</sup> parties. All parties will adhere to data security policies and procedures.
- **Licensed Content:** Content cannot be shared after the course/contract is complete. It is suggested that teachers sign off that they understand the parameters around licensed content, sharing content, and non-disclosures.
- **Progress Reporting:** Districts are responsible for ALE Reporting, referenced in [WAC 392-550-025](#). All parties are responsible for reporting and collaboration for progress.
- **WSLP:** Plans should specify which program is teaching what to the student.
- **Tracking weekly contact, progress, and intervention:** District will track contact, progress, and interventions with support – Genius/Edge delivers an incredible amount of growth and engagement data.
- **Students receiving Special Education:** Districts are responsible for ensuring accessibility to the program for students with disabilities and the management of 504 plans and IEP services Special Education Directors or other appropriate staff will be included as needed with student supports.
- **ALE Model:** District will claim state funding for student FTE generated by the program and will be responsible for ensuring compliance with the full chapter for ALE requirements to claim enrollment referenced here [Chapter 392-550 WAC](#).