

QUINCY'S PROMISE

All students **graduate** from high school and are **prepared** for the next step in their post-secondary education, career, and life.



FOUNDATIONAL STRATEGIES: Our Long-Term Priorities

Foundational strategies represent long-term areas of focus for the school district. They are considered pillars of the district's work. They help create priorities and provide direction.

EFFECTIVE TEACHING:

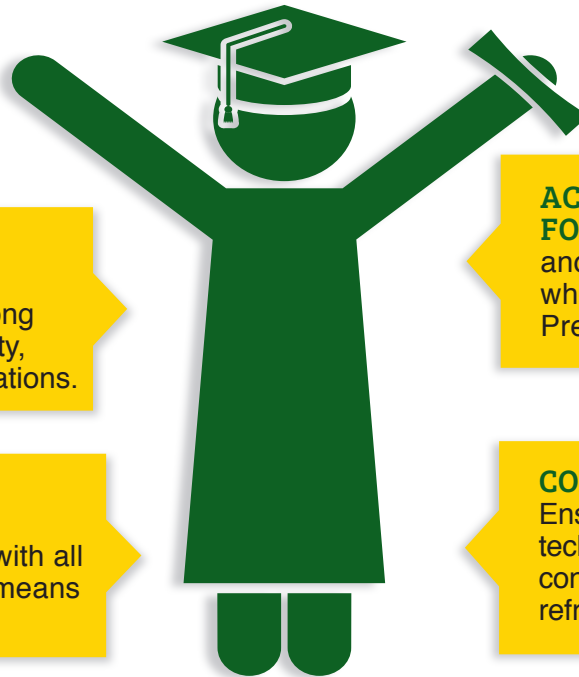
Prioritize high quality instruction in every classroom every day.

PARTNERSHIPS:

Develop and sustain strong partnerships between and among schools, parents, the community, and community-based organizations.

COMMUNICATION:

Provide on-going, two-way communication opportunities with all constituents utilizing multiple means and multiple languages.



ACCESS AND OPPORTUNITY FOR ALL:

Foster equity, access, and opportunity to support the whole child through his or her Pre K-12 educational career.

CONTINUOUS RENEWAL:

Ensure that resources – facilities, technology, and human – are continually monitored, maintained, refreshed and upgraded.

TARGETED STRATEGIES: Our 18-Month, High-Impact Priorities

Targeted, high-impact, strategies represent intense work within the district and are considered priority for focused work over an 18-month period.



Facilities: Plan, build and renovate schools according to our promises to the voters. Ensure that input for decisions about construction is inclusive of our whole community. Complete construction projects that are well-designed for instruction, maximize public use, and serve as a point of pride for the community. Provide ongoing and transparent communication about construction projects.



Whole Child: Increase support for the whole child, with a focus on partnerships with mental health, multi-tiered systems of support, school culture, and early learning opportunities for all students.



Parent Partnerships: Expand parent partnerships and engagement, with a focus on parent academy, parent voice and empowerment, and parental involvement.



Instructional Improvement: Improve student achievement, develop a clear vision for classroom instruction in the district, and pursue standards-based instruction with a focus on creating instructional maps.