

# **Goal: Determine if Chelan High School has an interest in working with the surrounding property owners and the City to make mutually beneficial access improvements.**

## **PURPOSE**

The extension of Raymond Street to Waterslide Drive can improve three significant problems facing the city.

1. Chelan High School traffic congestion and related student safety
  - a. Decrease traffic movements through school parking lot by up to 50%
  - b. Increased walkability to neighborhoods
2. South Chelan limited fire access
  - a. Farnham Street is a bottle neck for south Chelan which needs a secondary access for increased fire safety.
3. Connectivity of future development behind and around the high school
  - a. Future development will improve fire flow and water pressure in area
  - b. Future development will add significant 'non-nightly rental' homes and apartments to help alleviate housing cost and supply shortages

## **SCHOOL SAFETY**

### Student pedestrians at risk due to:

1. Congested traffic in school parking lots
2. Poor visibility around buses and other moving vehicles
3. Inadequate pickup and drop off parking
4. Limited public street access
5. Limited ability to walk to school grounds without crossing busy intersections

## **SOLUTION**

Connect Raymond Street to Waterslide Drive, adding an additional access to the school facilities.

1. Decreases congestion in parking lots due to improved ingress and egress
2. Provides buses a place to park where they are not conflicting with pedestrians
3. Provides increased off campus area for pickup and drop off adjacent to school grounds
4. Provides a secondary access for safety ease of congestion
5. More efficient traffic patterns ease impacts of new one way bridge
6. Decreases pedestrian road crossings

## **Cost to City/School**

1. Minimal most/all costs for Raymond street extension paid for by private funds or grants
2. Like other property owners, Chelan School District donates 60 feet right of way to the City for Raymond Street improvements.



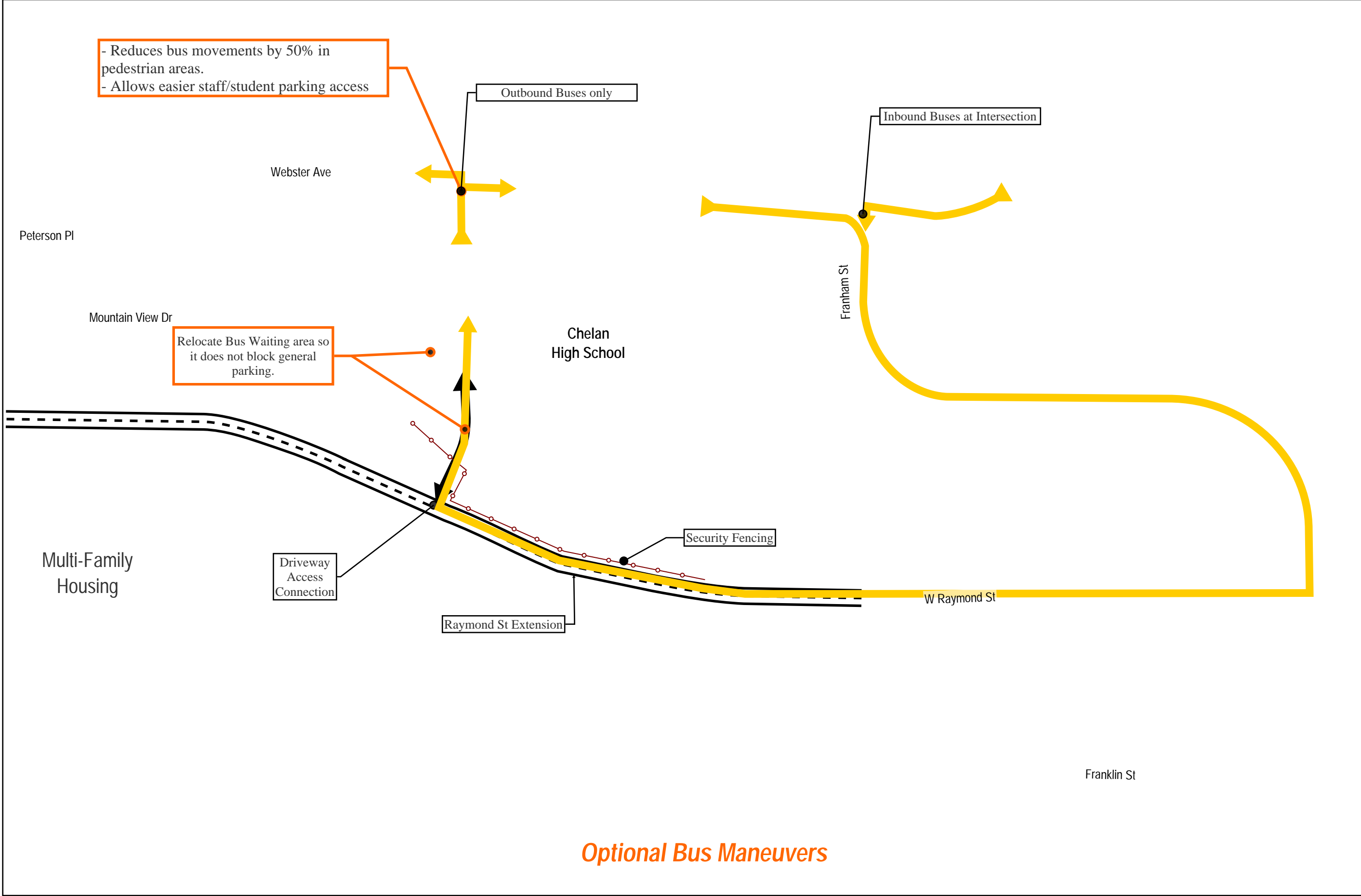








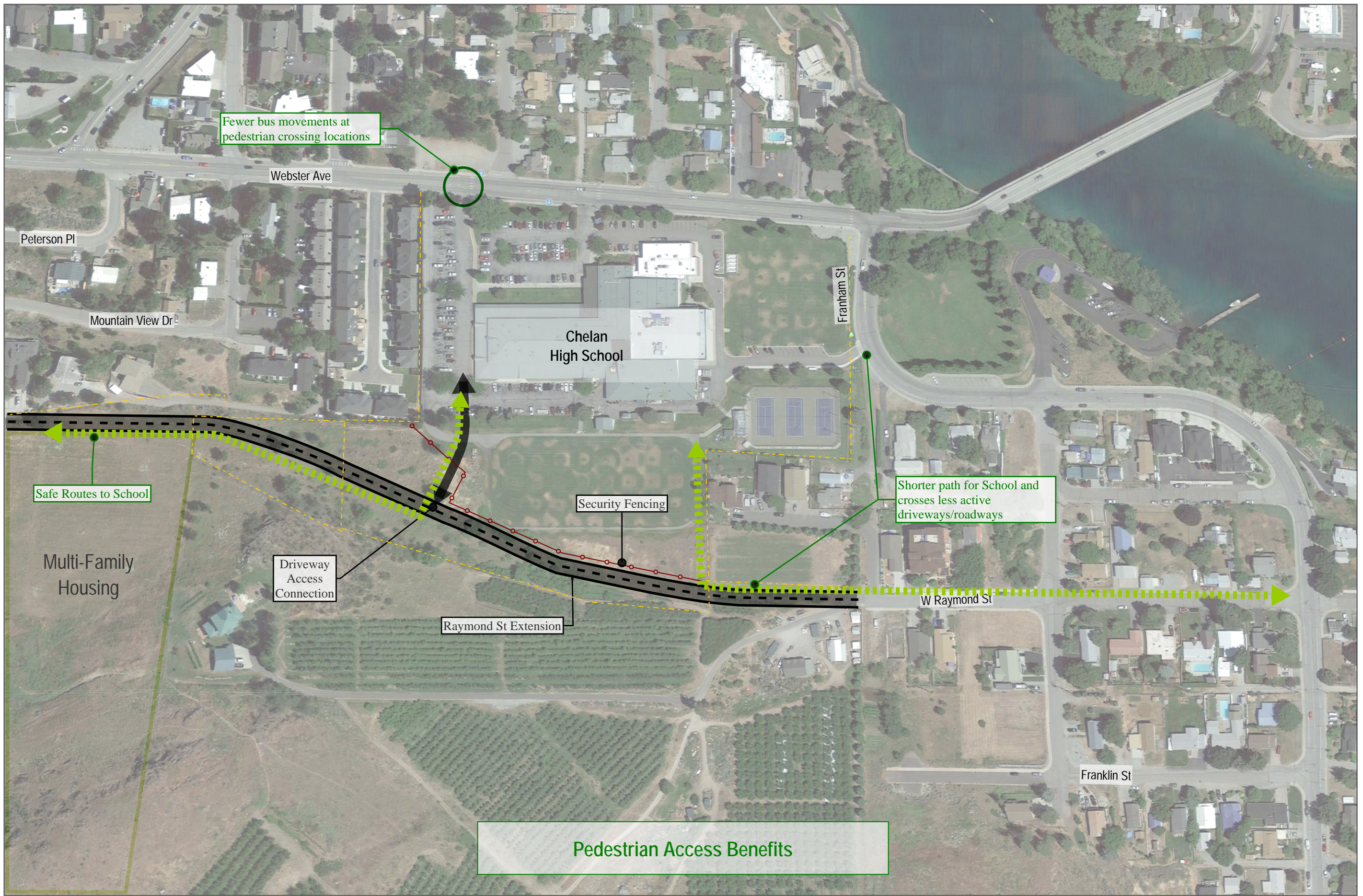




**Optional Bus Maneuvers**

**Roadway Extension School Focus Area**





## Roadway Extension School Focus Area