



**LAKE CHELAN
SCHOOL DISTRICT**

Educational Excellence for Everyone

Return to Learn 2020

Phone: 509.682.3515

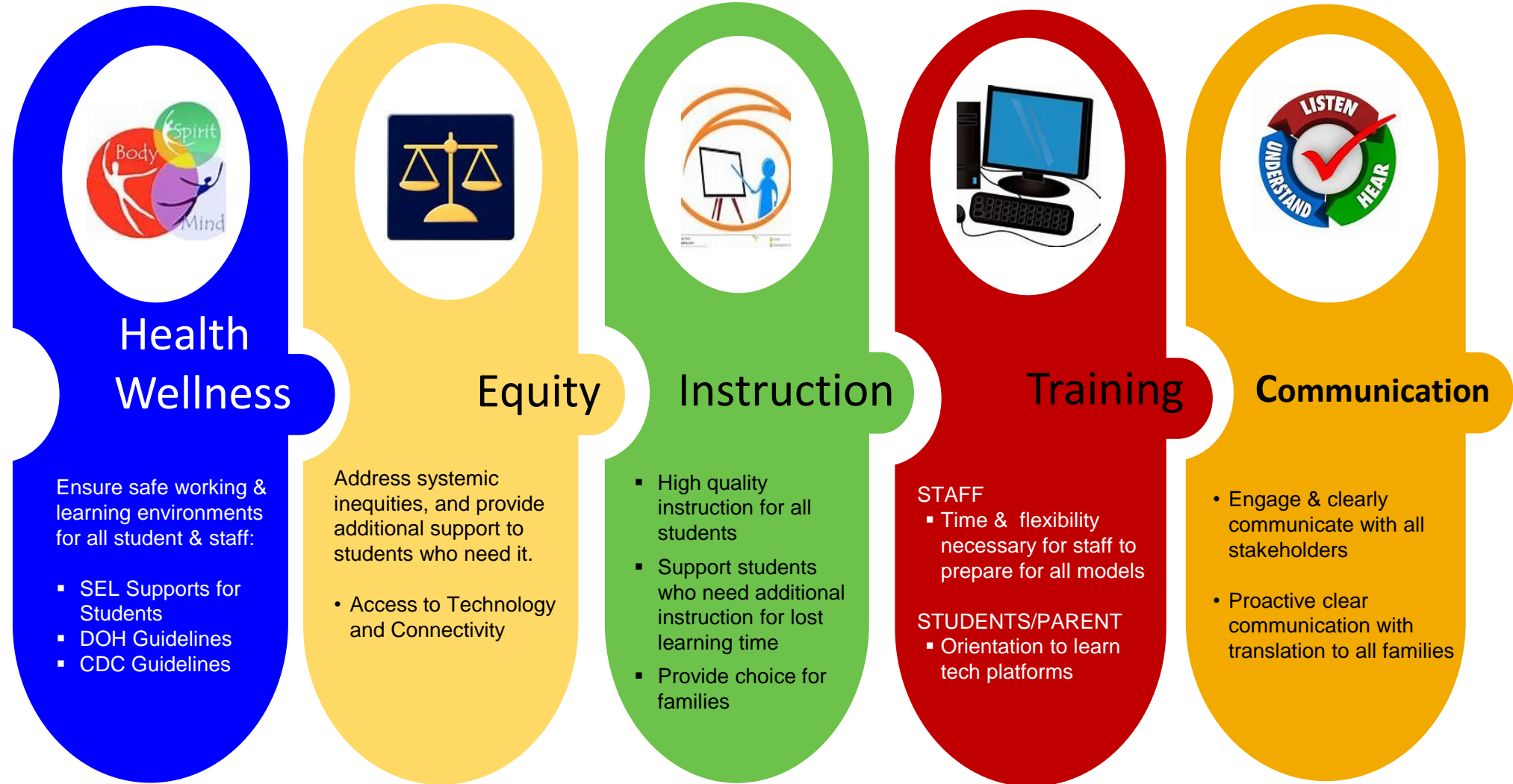
Fax: 509.682.5842

www.chelanschools.org

Board Meeting

09.29.2020

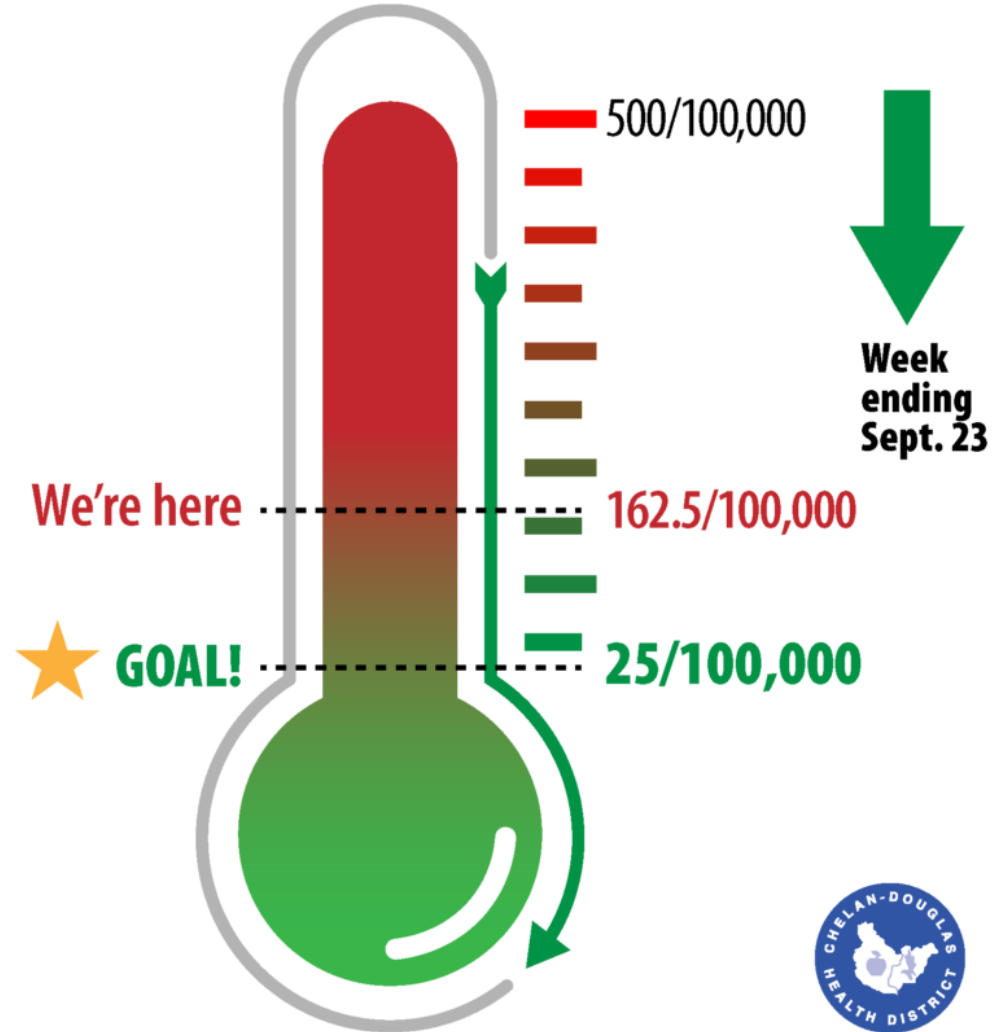
GUIDING PRINCIPLES: Re-opening Priorities



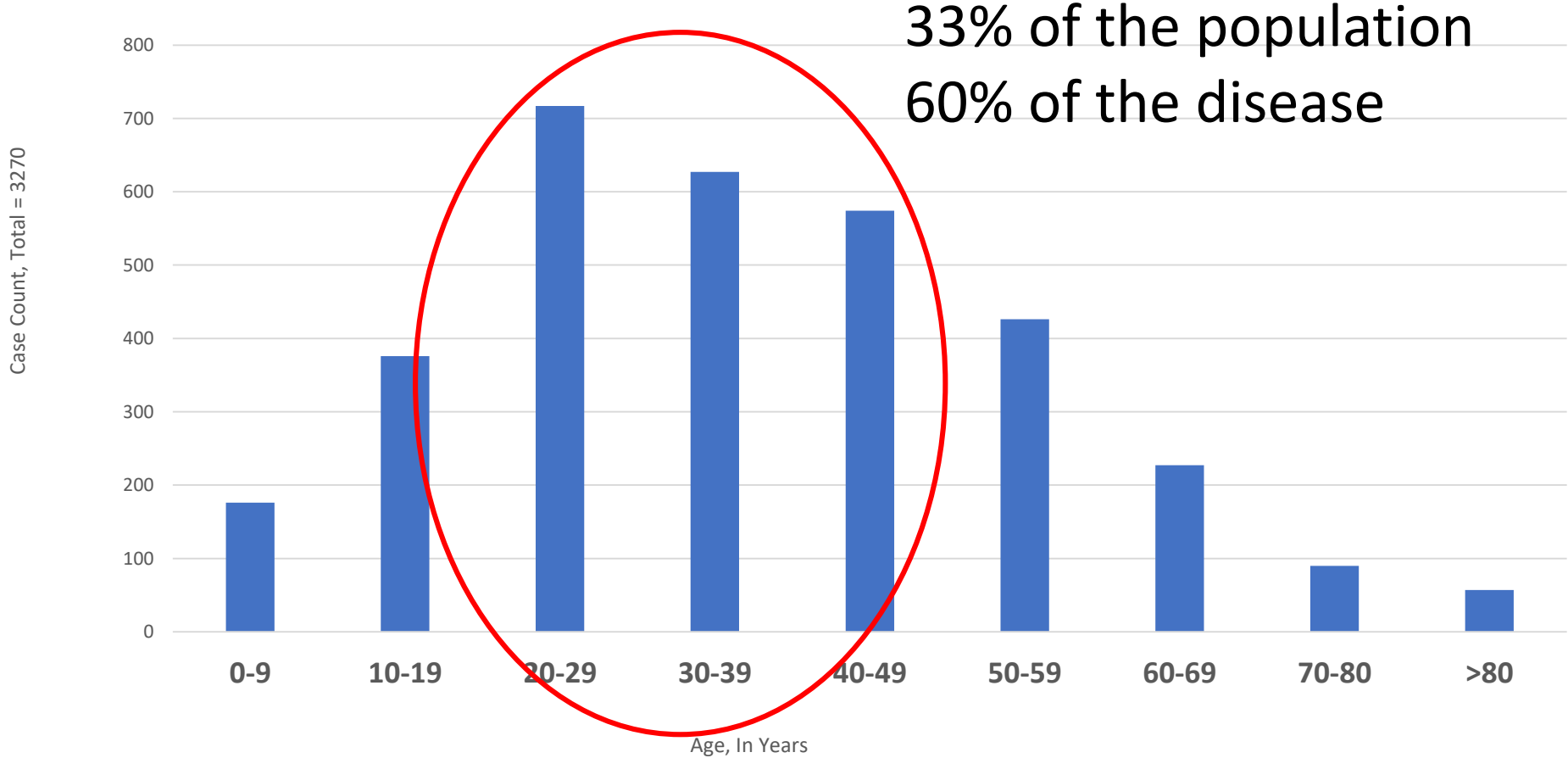
CDHD CURRENT CASE COUNT



MASK UP & stop COVID-19 from spreading



COVID-19 Cases in Chelan-Douglas, by Age



Mitigation

- Masking
 - Compliance down to 70%
 - Worse in smaller towns
 - Most effective tool we have
- CDC team
 - 5 bilingual / bicultural Epidemic Intelligence Services officers
 - Tasked with understanding transmission within Hispanic communities



Conclusions: Dr. Malcom Butler, Chief Medical Health Officer CDHD

- Incidence is dropping steadily
- Demographics are largely the same
- Classrooms have reopened safely for highest risk students
- Should Community testing suggest prevalence around 1%-2%, which may allow further reopening of classrooms
- There will always be risks to reopening, and to not reopening

CDC SCALE For OPENING SCHOOLS

(Latest Guidelines: 09.17.2020)

INDICATORS	Lowest Risk of Transmission in Schools	Lower Risk of Transmission in Schools	Moderate Risk of Transmission in Schools	Higher Risk of Transmission in Schools	Highest Risk of Transmission in Schools
Number of new cases per 100,000 persons within the last 14 days*	<5	5 to <20	20 to <50	50 to ≤ 200	>200
Percentage of RT-PCR tests that are positive during the last 14 days**	<3%	3% to <5%	5% to <8%	8% to ≤ 10%	>10%
Ability of the school to implement 5 key mitigation strategies: <ul style="list-style-type: none"> • Consistent and correct use of masks • Social distancing to the largest extent possible • Hand hygiene and respiratory etiquette • Cleaning and disinfection • Contact tracing in collaboration with local health department 	Implemented <u>all 5</u> strategies correctly and consistently	Implemented <u>all 5</u> strategies correctly but inconsistently	Implemented <u>3-4</u> strategies correctly and consistently	Implemented <u>1-2</u> strategies correctly and consistently	Implemented <u>no</u> strategies

*Number of new cases per 100,000 persons within the last 14 days is calculated by adding the number of new cases in the county (or other community type) in the last 14 days divided by the population in the county (or other community type) and multiplying by 100,000.

**Percentage of RT-PCR tests in the community (e.g., county) that are positive during the last 14 days is calculated by dividing the number of positive tests over the last 14 days by the total number of tests resulted over the last 14 days. Diagnostic tests are viral (RT-PCR) diagnostic and screening laboratory tests (excludes antibody testing and PT-PCR testing for surveillance purposes). Learn more: <https://www.cdc.gov/coronavirus/2019-ncov/lab/resources/calculating-percent-positivity.html>

PREPARING TO RE-OPEN IN- PERSON TIMELINE

