



**LAKE CHELAN  
SCHOOL DISTRICT**  
Educational Excellence for Everyone

# SUPERINTENDENT REPORT

# **SCHOOL RE-OPENING UPDATE 01.26.2021**

---

## **1. DATA SNAPSHOT**

- ❖ County Data
- ❖ City Comparisons
- ❖ LCSD Dashboard – current cases

## **2. VACCINATION ROLL-OUT**

## **3. LOOKING FORWARD**

- ❖ Increasing instructional time (AB Delivery Model)
- ❖ Full Time In-Person Learning

## **4. QUESTION/DISCUSSION PERIOD**

# COUNTY DATA SUMMARY 01.26.2021

COUNTY	Total + Cases	New PCR Cases 1/21	New ANT Cases 1/21	New Cases 1/21	New Cases Last 14 days 1/8 – 1/21	Currently Hospitalized	Total Deaths
CHELAN	<b>5752</b>	19	15	24 31/100k	510 660.9 per 100 k	9*	34*
DOUGLAS	<b>3035</b>	7	11	18 41/100k	285 656.2 per 100 k	3*	15*
<b>TOTALS</b>	<b>8787</b>	16	26	42 35/100k	795 659 per 100 k	25**	49**

\* Includes residents hospitalized outside of the county

\*\* Total COVID + patients hospitalized in Chelan-Douglas including surrounding counties





# WEEKLY COVID TRANSMISSION RATES (County vs Local)

Week of Jan. 6 693/100,000

Week of Jan. 20 472.25/100,000



Week of Jan. 5 686/100,000

Week of Jan . 20 829/100,000

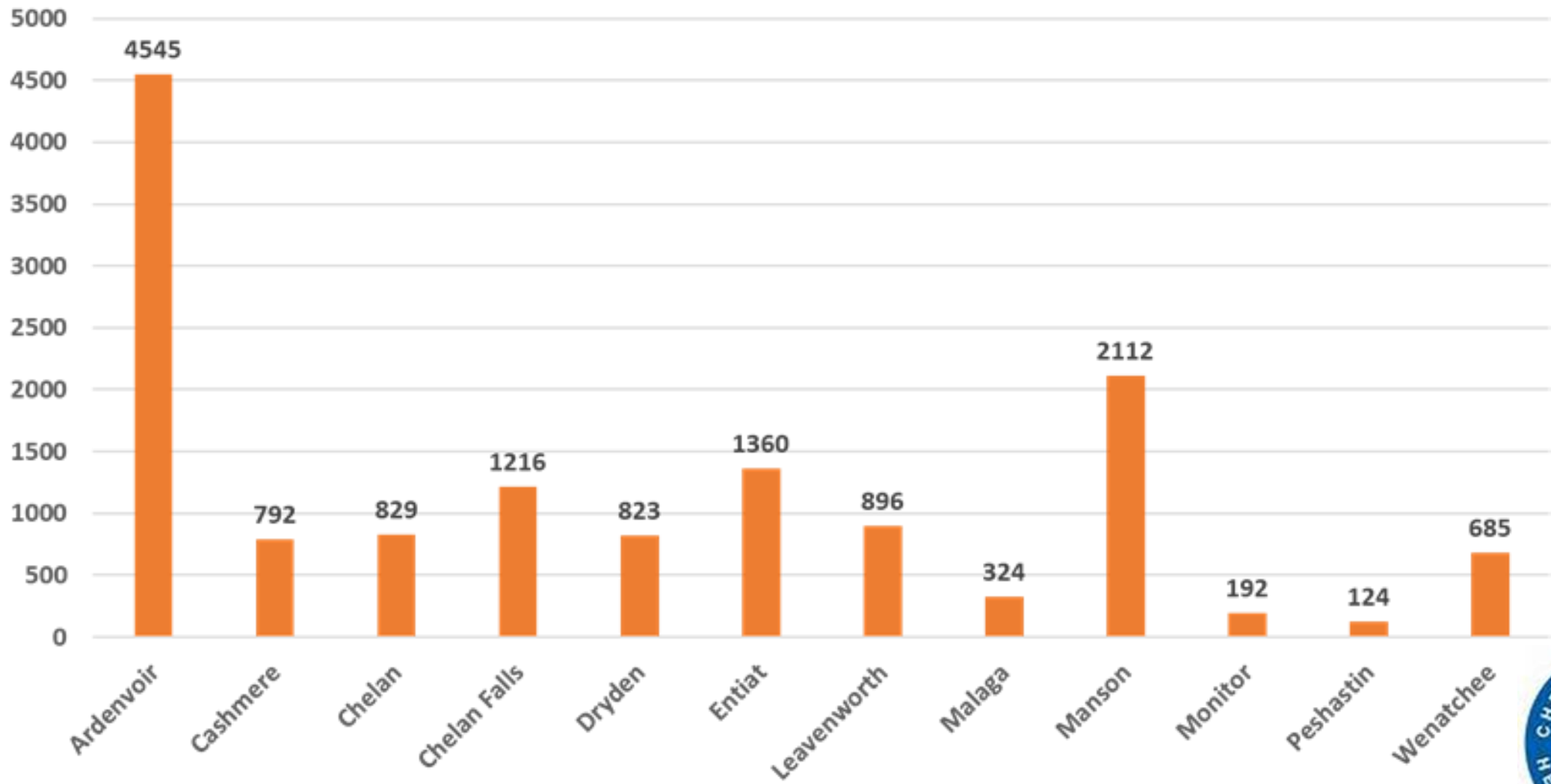
LCCH Outbreak  
5 patients contract  
COVID-19



COUNTY 

LOCAL 

New COVID-19 Cases per 100,000 Population By City In Chelan County, January 6 - 19



# LOCAL CITY COMPARISONS

CITY	CASE COUNT		14 DAY INCREASE		14 DAY INCREASE PER 100,000	
	01/05	01/19	12/23 – 01/05	01/6 – 01/19	12/23 – 01/05	01/6 – 01/19
Chelan	283	318	29	35	686.9	829
Chelan Falls	31	35	2	4	607.9	1215.8
Manson	163	194	18	31	1226.2	2111.7
Entiat	73	90	14	17	1120	1360
Cashmere	543	568	75	25	2375.7	791.0
Leavenworth	236	254	24	18	1194.0	895.5



# LCSD COVID-19 DASHBOARD

School Site	Attending In Person		New Confirmed + Cases 1/11		Close Contacts in Quarantine 1/11		Cases Originating on Campus 1/3-1/16		Cases Originating Outside of School 1/3-1/16	
	Students	Staff	Students	Staff	Students	Staff	Students	Staff	Students	Staff
PRE-SCHOOL	24	6	-0-	-0-	-0-	-0-	-0-	-0-	-0-	-0-
MOE	466	67	-0-	-0-	-0-	-0-	-0-	-0-	-3-	-0-
Chelan Middle	296	29	-0-	-0-	-0-	-3-	-0-	-0-	-3-	-0-
CHELAN HIGH	35	48	-0-	-0-	-0-	-2-	-0-	-0-	-2-	-0-
CSI	24	3	-0-	-0-	-0-	-0-	-0-	-0-	-0-	-0-
<b>DISTRICT TOTALS</b>	<b>1,182</b>	<b>153</b>	<b>-0-</b>	<b>-0-</b>	<b>-0-</b>	<b>-0-</b>	<b>-0-</b>	<b>-0-</b>	<b>-8-</b>	<b>- 0-</b>

# Dr. Butler's Conclusions CDHD INSIGHTS:)

---

(Dr. Malcolm Butler – Chief Medical Officer Confluence Health)

- Zero outbreaks at present in county schools
- Concerns from Europe regarding B117 variant
  - may have proclivity toward children-studies suggest that incidence in children precedes incidence in adults
- Increased virulence will require stricter mitigation
  - Masking/social distancing more important than ever
- Time to begin messaging that we may need to close down classes in the future regarding B117 variant





# VACCINATION Update



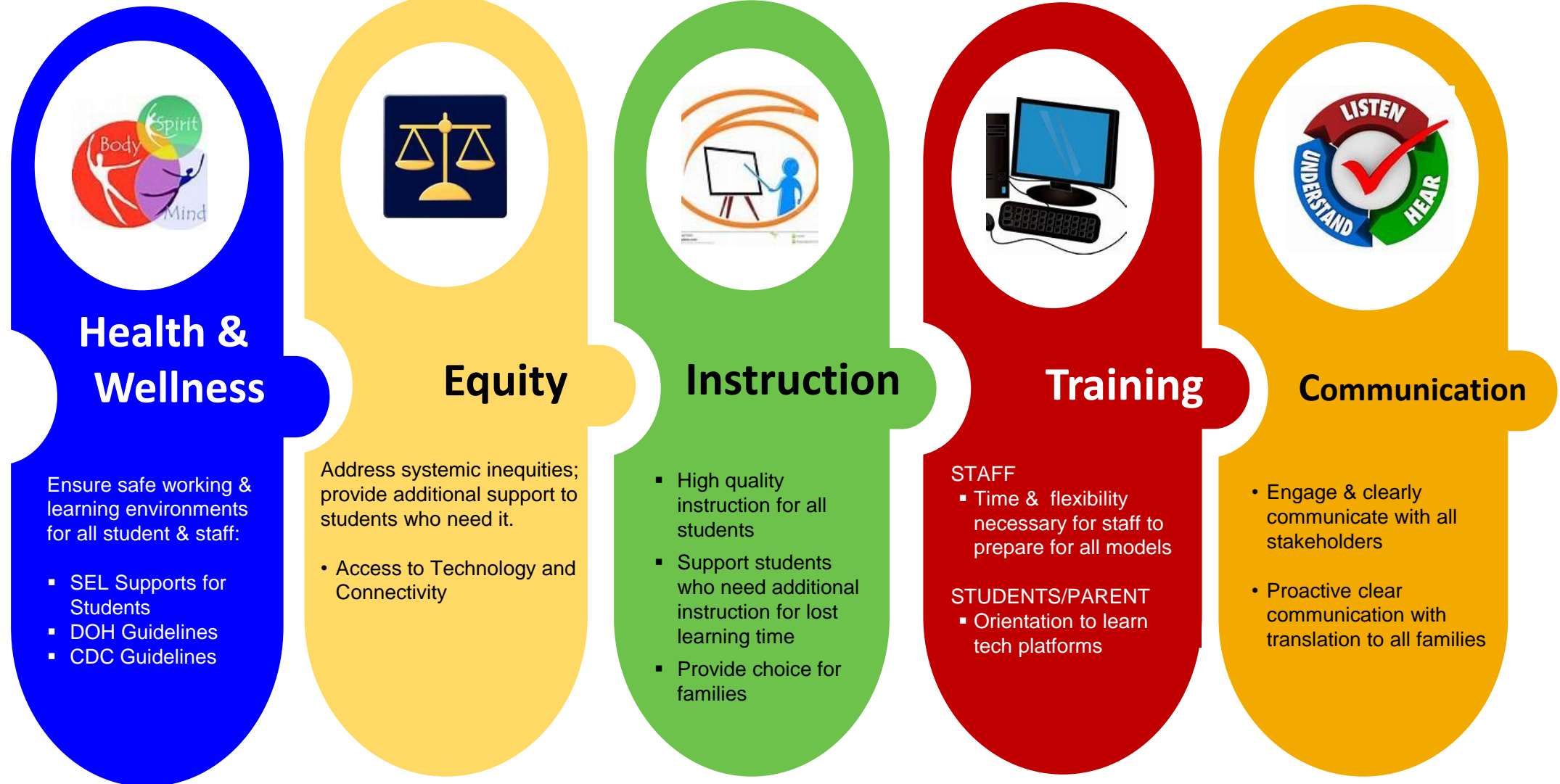
- Logistics prep completed
- Date ?
- Staff Sign-up
  - Cert/Adm | Classified | Afters
  - 52/100 | 29/80 | 9

# Looking Forward

---

1. What would it take to change our current instructional model from AM/PM (1/2 day - daily) to AB (full-days alternating)?
2. What potential opportunities and/or possibilities exist to increase instructional time for students?
3. When do we anticipate being able to return to a full-time in- person instructional format?

# LCSD GUIDING PRINCIPLES



## Health & Wellness

Ensure safe working & learning environments for all student & staff:

- SEL Supports for Students
- DOH Guidelines
- CDC Guidelines

## Equity

Address systemic inequities; provide additional support to students who need it.

- Access to Technology and Connectivity

## Instruction

- High quality instruction for all students
- Support students who need additional instruction for lost learning time
- Provide choice for families

## Training

### STAFF

- Time & flexibility necessary for staff to prepare for all models

### STUDENTS/PARENT

- Orientation to learn tech platforms

## Communication

- Engage & clearly communicate with all stakeholders
- Proactive clear communication with translation to all families

## RE-OPENING PRIORITIES

# Switching to an AB Instructional Model

---

- INSTRUCTION

- Teaching remote and in-person simultaneously
- Inherent challenges to remote learning (especially for full days)  
(executive functioning skills / isolation factors)

- CHILD CARE

- families would be challenged to re-organize Child Care

- TRANSPORTATION

- Switching models would apply to the entire district

- SAFETY (mitigation challenges)

- at least one meal would need to be served on campus

# Full - Time Instruction

---

## **Safety: Staff & Students**

- Status of the Virus
  - B117 Variant
- Mitigation strategies
  - social distance students (class size / class configuration)
  - food service (meals served on campus)
  - cleaning/disinfection