



Lake Chelan School District Highly Capable Program Update

January 2020



**Lake Chelan School
District
Highly Capable
Handbook**



LCSD Highly Capable Program Mission

To provide experiences that meet the unique cognitive, social, and emotional needs of potentially gifted and identified gifted students

To support all students in reaching their target learning goals to become successful individuals in the classroom, school, and community

LCSD Highly Capable Program Goals

- Expansion of academic attainments and intellectual skills;
- Stimulation of intellectual curiosity, independence and responsibility;
- Development of a positive attitude toward self and others; and
- Development of originality and creativity.

Number of Students Served

District 63 Students (4%)

MOE 19 students (3%)

CMS 24 students (8%)

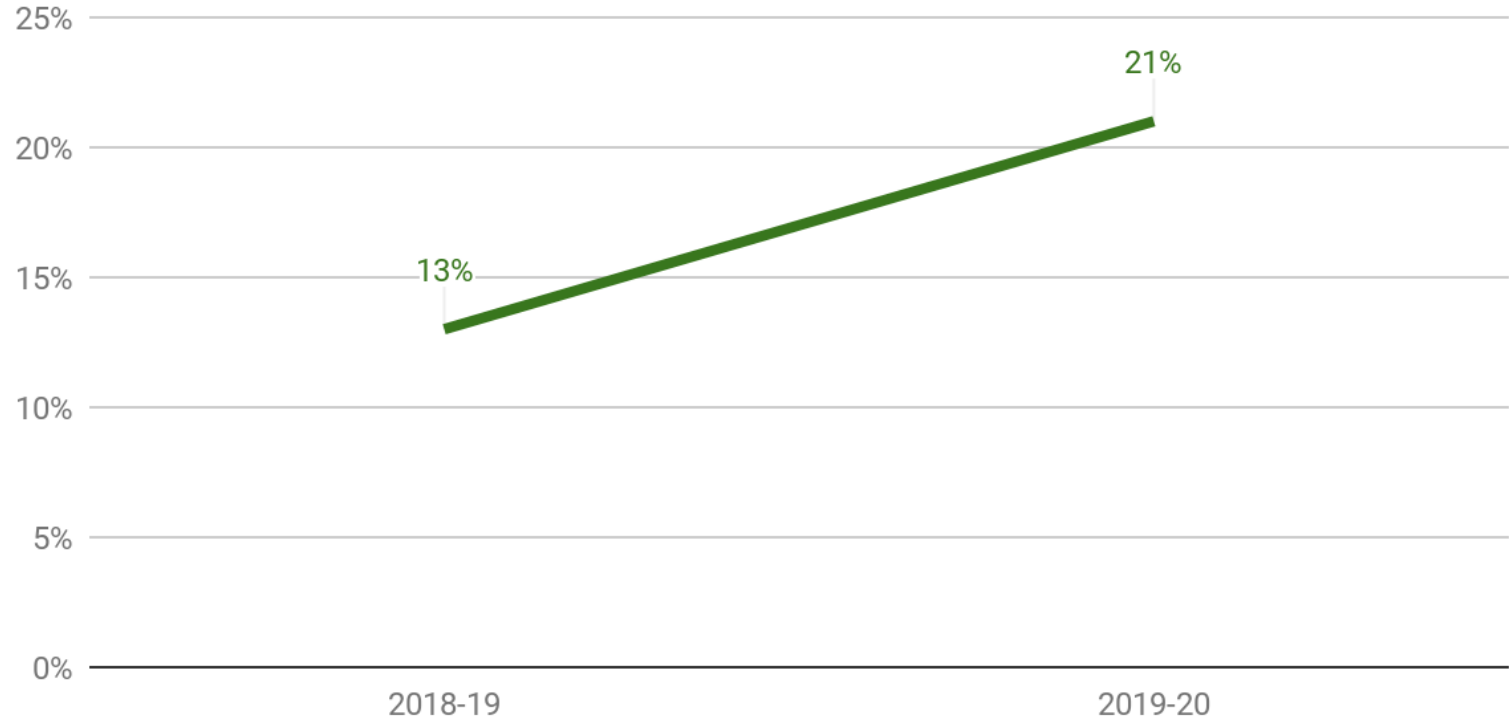
CHS 19 students (4%)



Identification

Body of Evidence Options			
Quantitative	<p style="text-align: center;">Achievement</p> <ul style="list-style-type: none"> • SBA (Smarter Balanced Assessment) • i-Ready Diagnostic Test • RAPID Reading Assessment • EasyCBM Math Assessment 	<p style="text-align: center;">Behavior Characteristics</p> <ul style="list-style-type: none"> • Home Rating Scales • Teacher Rating Scales • Referral Checklist • CLED Scale 	Qualitative
	<p style="text-align: center;">Aptitude</p> <ul style="list-style-type: none"> • CogAT • NNAT3 	<p style="text-align: center;">Demonstrated Performance</p> <ul style="list-style-type: none"> • Performance Tasks • Work Samples • ELPA21 	

Percent of Students in Highly Capable Program who are Hispanic



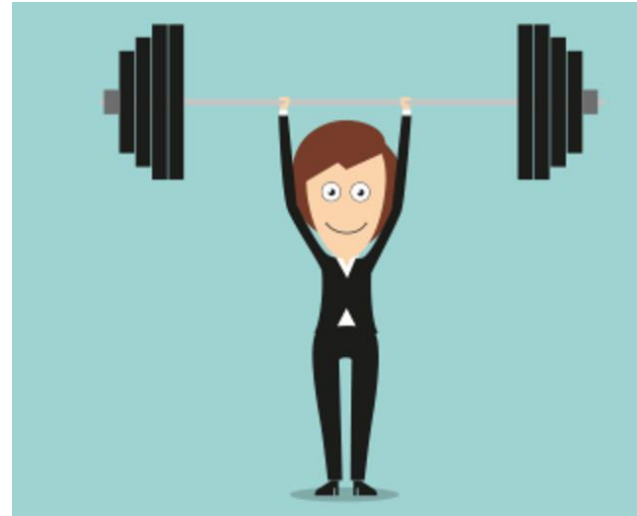
Services Offered

Instruction

Coaching

Professional Development

Resources/Communication



Kari McLaren

Instructional Program Description



Program Evaluation

- District Assessments
- State Assessments
- Anecdotal Observations
- Student Reflection
- Surveys-Parent, Student, Teacher
- Program Participation

