

SHORELINE SCHOOL DISTRICT

Secondary Highly Capable Program Review Committee



Presented: May 7, 2018

Goals for our Committee



1. Recommend how we serve the needs of Highly Capable learners while maintaining an open enrollment honors and Advanced Placement process
 - a. Recommend service delivery model at the middle school
 - b. Determine if there are opportunities to expand our college credit offerings and honors and Advanced Placement service models in the high schools
2. Study how to increase access and equity in the Highly Capable program

Committee Members



Jessica Raman (teacher)

Nate Stearns (teacher)

Pam Simpson (teacher)

Kim Presik (teacher)

Rebbecah Emanuel (administrator)

Melyssa Stone (administrator)

Steve Hirsch (school psychologist)

Pat Valle (SEA president)

Ben Silber (student)

Nelly Szilagyi (parent)

Johanna Polit (parent)

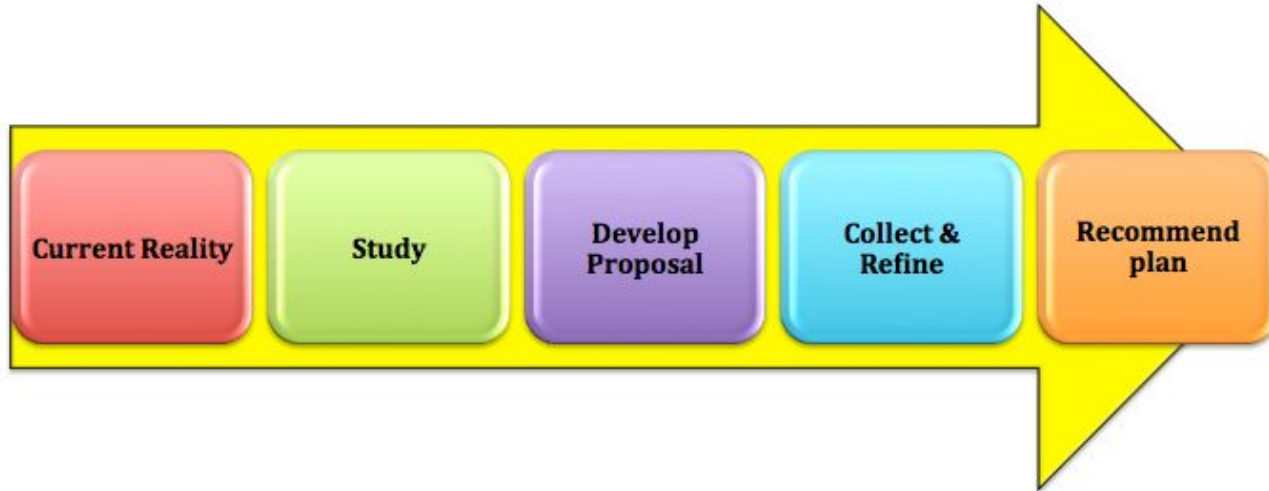
Halina Polit (student)

Linda Tsai (parent)

Maria Stevens (Director and Co-Chair)

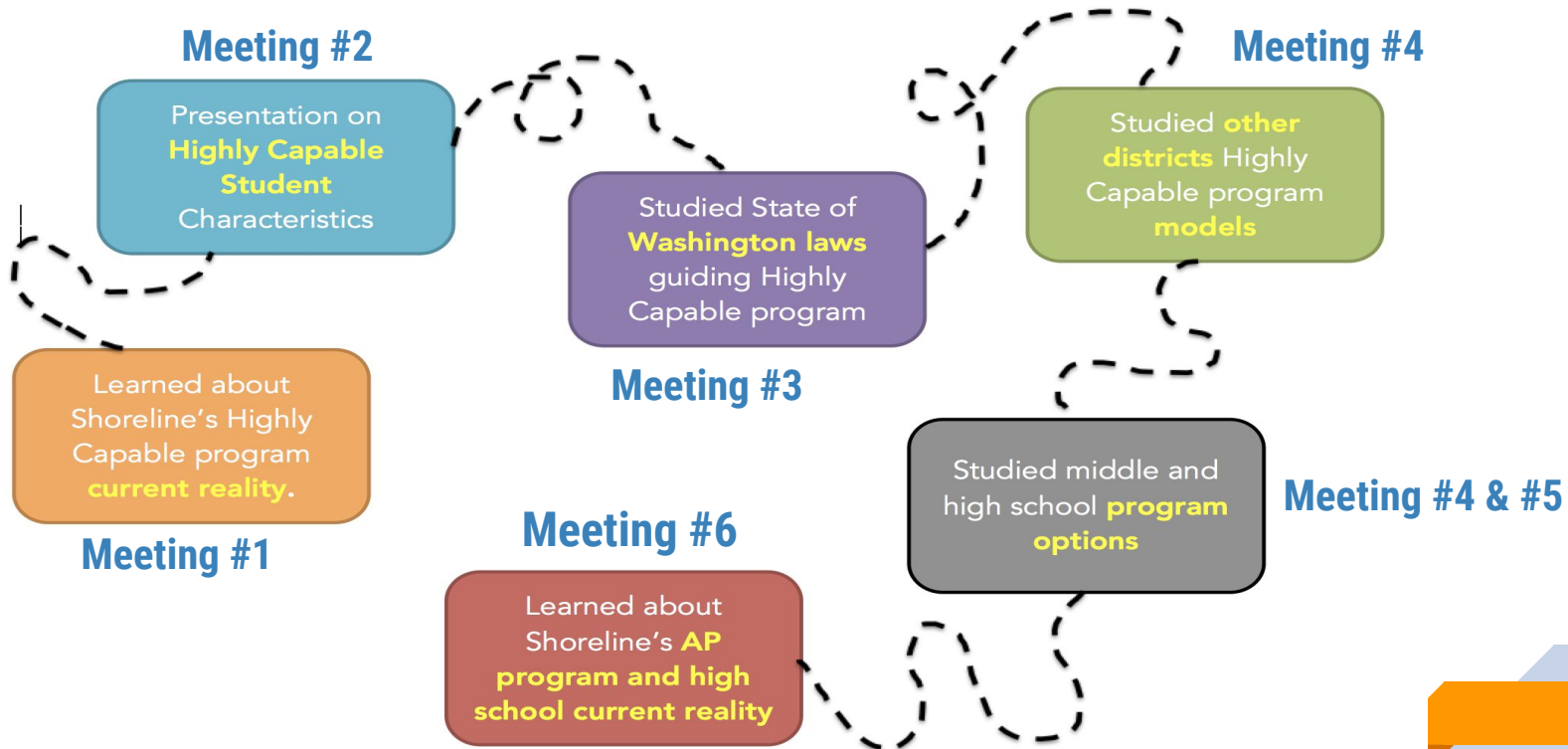
Jennifer Etter (TOSA and Co-Chair)

Committee Process





Work of the Committee



Reminders & Considerations



- **New revisions to testing model:**
 - ▷ Now identifying and serving students in single area (math or ELA)
 - ▷ Neighborhood and Magnet program service model
 - ▷ Purposeful process for considering and identifying typically underserved student groups

- **Plan Considerations:**
 - ▷ Our plan will serve a broader group of students than we have in the past
 - ▷ Middle schools will change in next couple of years
 - ▷ Continuum of service model to meet varying student learning needs
 - ▷ Alignment with elementary service model
 - ▷ Plan needs to allow for student personal interests and preferences
 - ▷ Graduation Requirements - Core 24

Recommendations

The committee agreed to four recommendations

Recommendations



1. Annual process to “opt in” or “opt out” of services

- ▶ In keeping with Washington State expectations, Shoreline will provide students with opportunity to “opt in” or “opt out” of service.
- ▶ Shoreline will provide this option to families and students on an annual basis.

Recommendations



- 2. Pursue strategies/models to provide social emotional support for Highly Capable students**
 - ▷ Provide training for staff

Recommendations



3. Middle School

- ▶ At the middle school level, students will be grouped in cohorts for ELA and math. When insufficient numbers are identified to compose full classes, HiCap students will be clustered with additional students being added to create full classes.
- ▶ During the upcoming middle school instructional conversations, explore possible clustering of students in areas of SS and science

Recommendations



4. High School

- ▷ Maintain current AP class offerings
- ▷ Explore creation of blended/hybrid learning AP Capstone course

Timeline for Implementation

■ 2018-2019:

- ▷ Cluster in ELA and math

■ 2019-2020:

- ▷ Cohort and/or Cluster in ELA and math - determined by numbers and FTE
- ▷ Review of High School Hybrid Capstone class viability based on summer school pilot

Questions





THANKS!